

HORNSBY DISTRICT WOODTURNERS INC.

Established 1983.

eNEWSLETTER JUNE 2022.

A warm welcome to the 10 of us who assembled on the Saturday of the Queen's Birthday long weekend. Covid seems to be at bay but beware and if you need help please advise, RUOK?

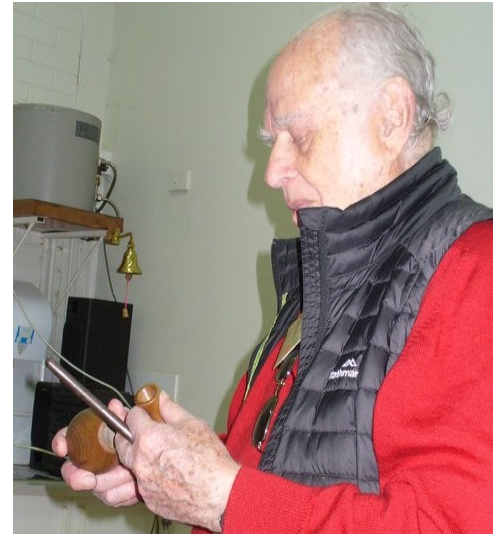
Little to advise other than to thank Bert and Elwyn each for another supply of honey dippers towards our summer sales. Plans are to repair the shelving in the lathe area, reorganise some of the peg boards and reset the tool holding 'lazy-Susans.' Meanwhile please continue to give a little extra time to cleaning up and replacing tools etc in their correct places please.

The program for the day was organised to show DVD of a recent Trans Atlantic demonstration by Irish turner Glenn Lucas of *Turning An Irish Platter* and lasts for 90 minutes.

Before the demo a shorter than usual Show & Tell was run by John.

Tim commenced with three turnings; a new knock-out bar for his home lathe and an Itinerary Box and a smaller box both made from part of an unknown wooden fence post (probably gum wood) believed to be over 100 years old.

Keith followed with a number of whistles he had turned some time ago. A penny whistle,



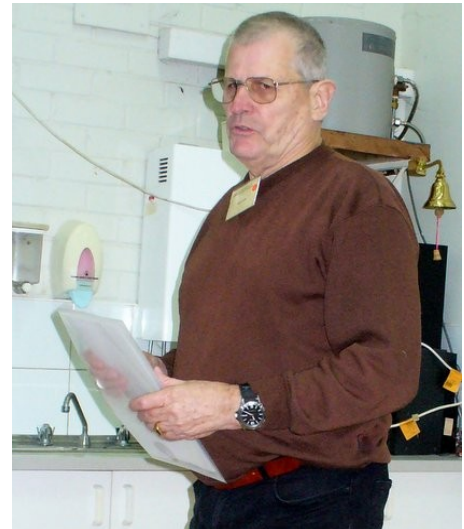
an owl carved caller and a painted Romanian duck hooter. All interesting but difficult to play. Finally Mark showed an electrically engraved hatchet head. The design was by/from Google with the work being done using a transformer and 12 volt DC system with the negative electrode of a cotton bud soaked in saline solution and the other electrode connected to the metal head. Quite effective! Mark suggests a couple of Youtubes is all that is necessary to get started.

Information Exchange was run by Brian.

The main exchange was from Nick with a rundown of his sourcing of an effective full face dusk mask. Nick had surfed the web finding and comparing costs and functions and spoke about his choice which is supplied by a pump, filter and batteries appended to the turner's waist. Not only was this his best pick, he was able to purchase it for the best price virtually \$200 below other less effective units. The unit was in the post at the time of the meeting so we all have to wait until July to explore this dust mask. Meanwhile Nick suggests we check the Trend brand video on the web for specifications.



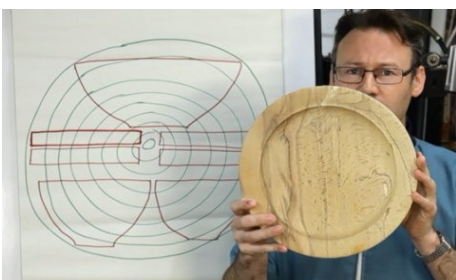
Instead of a live demonstration this meeting showed a DVD of a training demonstration given by skilled artisan and turning trainer Glenn Lucas. The text and photos below are planned as a summary giving an idea of some of the significant features only. For full details this video are available for member loan as part of an eight disk set of recent turning demonstrations by Glenn Lucas.



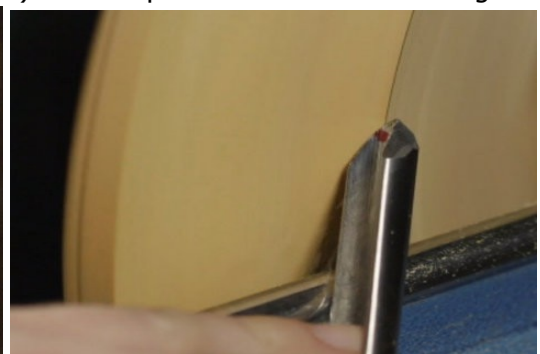
For the platter, a dry blank available from his own stock 300 x 32 mm (12 x 1.25 inches) was selected paying particular attention to the grain orientation. Best to choose quarter sawn wood rough cut with parallel sides, the latter reducing the sanding required.

Faceplates are recommended as these hold the blanks straight.

Use a 5/8" (16 mm) bowl gouge for the initial shear scraping to level the base surface. Pull cuts were suggested at 800 rpm.



Mark out the width of the rim (80% of the platter's diameter) and scrape the from this to the edge of the bowl to get a 45 degree angle while allowing a 7 mm thickness at the edge of the blank. Refine by gentle scraping turning this 'under-rim' flat to form a Roman Ogee. Then refine the platter's edge using the gouge with the bevel rubbing taking care to avoid catches.



Once the base is flattened use a smaller gouge to turn a very slightly concave base finish then commence marking out the base. For this platter the base needs to be about 80% of the platter width



to prevent rocking when used with a knife and fork. Measure and mark the circular expansion diameter of the chuck jaws to be used, in this case 105 mm. Then with a specialised sharp square scraper peel away the wood between the centre and the 105 mm line, commencing at the centre taking say half a mm away and working to a depth of say 3 mm at the 105 mm diameter thus creating a convex 'inner' bottom.

Increase the 3 mm depth at 105 mm diameter to 4 mm using the square scraper to give a 77 degrees dovetail in the wood to suit the jaws. Clean up this recess for accurate accommodation of the jaws of the chuck later.

Wet sand the base with cloth-backed sandpaper 180 to 320 grit soaked in walnut oil. Ensure that the friction causes some heating as this 'fixes' the setting of this oil.

Remove the blank from the lathe and undo the faceplate. Carefully apply the recess in the base to the closed jaws of the chuck ensuring a snug, tight and aligned fit. Also check for a vertical profile of the



blank. This method of fitting the expansion jaws into the wood will hold tightly and with no indentation of the finished wooden base.

Check for a firm hold of the blank and begin hollowing carefully with a 5/8" gouge at 800 rpm. Commence turning the rim to about 30 mm in width with a slight concave profile and about 6 or 7 mm thick.



Follow by turning the area between the rim and the centre. It was suggested that after turning the centre to its maximum depth (corresponding to a thickness of 6 mm and measured with Martel callipers), that a number of grooves be turned between this and the edge of the rim.



Finish the rim initially with a 3/8" gouge, then a negative rake scraper if necessary. Turn a bead on the edge of the platter about 7 – 8 mm diameter and clean-up with a skew chisel or scraper.

Return to the centre area of the platter and begin a push cut turning away the peaks of the grooves to follow a curved surface to blend with the centre already turned to depth. Use a 5/8" gouge held low by the right hand turning with lite cuts remembering that the platter is held on the chuck by only 4 mm of depth. A number of passes will be necessary. Remove any resultant high areas or ridges with a negative rake scraper to give a perfectly curved profile.

Turn the inside rim edge into the central area of the base.

Check the platter top for any needed corrections and sand as for the base. Reverse turning on the lathe for improved sanding, a gentle sanding with fine paper with the grain and sanding a few days later can all contribute to a finer and durable finish.

So the platter is finished and where required ready for actual food service! Otherwise it should make an ideal show piece.



Nice work Glenn and I'm sure that all present found your demonstration most impressive.....thanks.

Our next Saturday demonstration will be on 9th July from 10 am.

For further interest or to join-in woodturning go to www.hornsbymensshed.org.au